

## THE NEED...

**FUNDING** is the largest obstacle between St. Charles Parish and a complete, functional outer hurricane protection levee system for **ALL** its residents.

Local funds used for levee construction and operation and maintenance of existing infrastructure have traditionally come from the general fund and/or Public Works drainage.

*Now, the parish is seeking a 4-mill property tax to provide a new, dedicated source of funding that will set the parish on a sustainable path to achieve full protection within the next 10 to 15 years.*



We know that **flood protection** will continue to be a major need in St. Charles Parish. Recent hurricanes have shown us the vulnerabilities that exist on both sides of the river. **Federal dollars are NOT available.**

**<** *Open the brochure to learn more about how the parish's plans for flood protection will affect you.*

**ON THE COVER:** Hurricane Katrina bears down on Louisiana in 2005; the fiercest part of the storm narrowly missing St. Charles Parish.

**ON THIS PAGE:** Airline Highway, a major evacuation route, threatened by floodwaters during Hurricane Isaac in 2012.

#scpfundingTheFuture | [scpfundingthefuture.com](http://scpfundingthefuture.com)

This public document was published at a total cost of approximately \$0.19 per copy, not including postage. 22,626 copies of this document were published at a cost of \$4,230.70. This document was produced by the St. Charles Parish Office of Public Information to inform citizens of government affairs.



St. Charles Parish Public Information Office  
P.O. Box 302  
15045 River Road  
Hahnville, LA 70057

Prst Std U.S. Postage  
**PAID**  
Hahnville, La. Permit #2

## LOCAL POSTAL CUSTOMER

# VOTE!

Early Voting: April 18 - April 25

Election Day: May 2

FIND MORE INFORMATION ABOUT UPCOMING PARISH MILLAGE PROPOSALS AT [SCPFUNDINGTHEFUTURE.COM](http://SCPFUNDINGTHEFUTURE.COM)

On **May 2**, St. Charles Parish voters will decide the funding future of levee projects to protect **ALL** residents on both the West and East Banks...

# LEVEES

## MILLAGE PROPOSAL

*An informational guide*

ELECTION DAY: MAY 2  
EARLY VOTING: APRIL 18 - APRIL 25

SCP FUNDING THE FUTURE  
[www.scpfundingthefuture.com](http://www.scpfundingthefuture.com)



## WHAT IT MEANS FOR YOU...

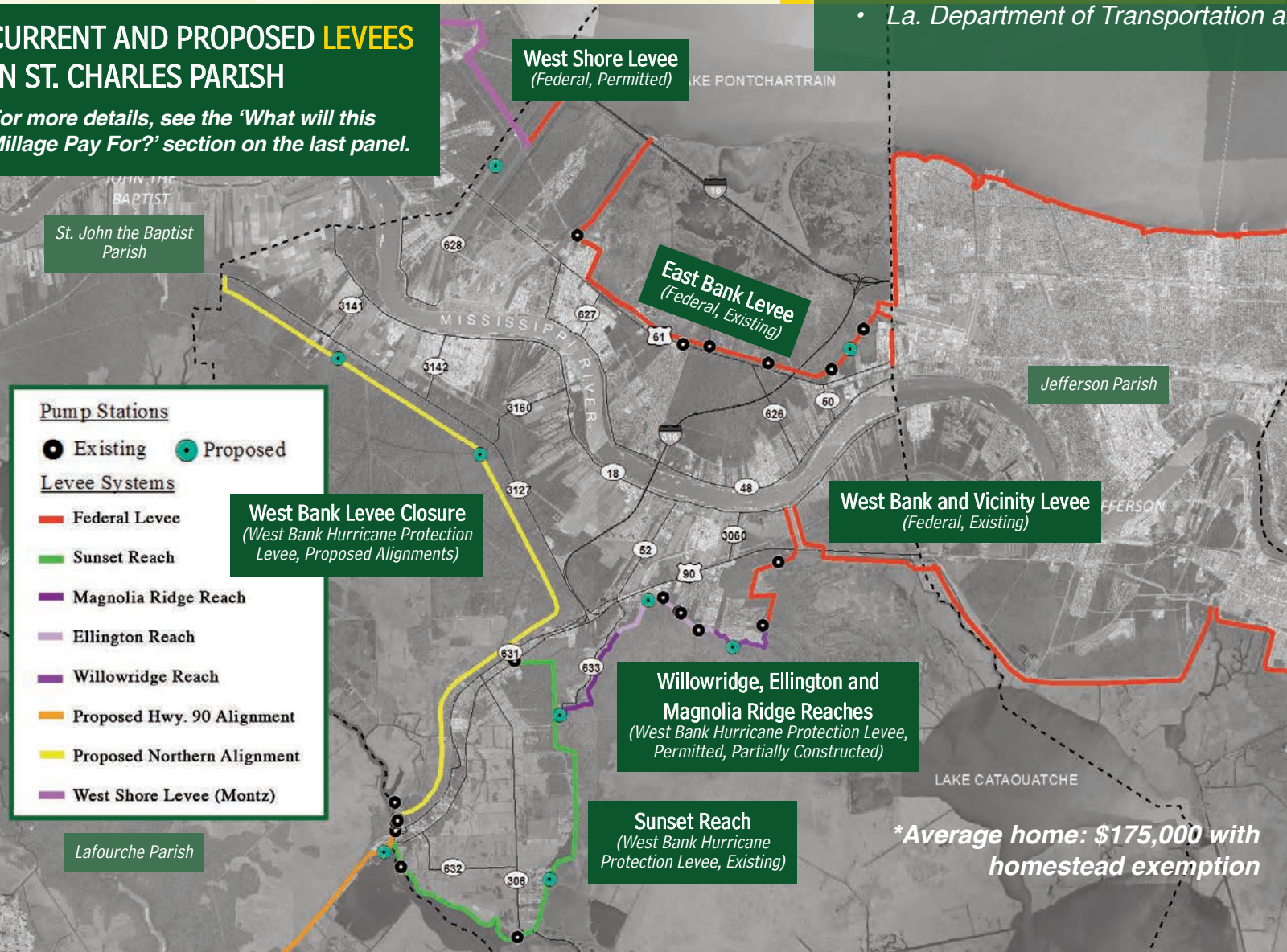
This proposal will cost **\$36 per year** for the average homeowner\* in St. Charles Parish, which is less than a normal tank of gas. In August 2015, the St. Charles Parish Council is set to roll back the road lighting millage by 0.4 mills, reducing the total impact of the proposal to 3.6 mills.

### WITHOUT THE MILLAGE...

St. Charles Parish has enough funds to complete the majority of the earthen portion of the Ellington Reach of the West Bank Hurricane Protection Levee and the remainder of the Willowridge Reach and pump station. After that, funds will have been exhausted and **NO WORK** will be able to be completed on levees in the parish. Operation and maintenance of existing levees will continue to be funded out of the general fund and Public Works budget, reducing available money for interior drainage needs.

## CURRENT AND PROPOSED LEVELS IN ST. CHARLES PARISH

For more details, see the 'What will this Millage Pay For?' section on the last panel.



## FINANCIAL OUTLOOK...

While the millage is slated to bring in **\$4.8 million** in its first year, parish leaders will be able to leverage revenue to sell bonds and provide matches for construction grants.

By 2026, the parish could generate **\$157-270 million\*** for levee construction. The parish will continue to work with the Louisiana Coastal Protection and Restoration Authority (CPRA), Lafourche Basin Levee District and Pontchartrain Levee District to provide for cost shares.

**\* This amount leverages local funds with other available funding from sources such as:**

- The BP RESTORE Act
- Gulf of Mexico Energy Security Act (GOMESA)
- FEMA Hazard Mitigation grant funding
- Louisiana State Capital Outlay
- Coastal Protection and Restoration Authority
- La. Department of Transportation and Development



Find video on Cox Cable Channel 6, AT&T U-Verse or [www.scpfundingthefuture.com](http://www.scpfundingthefuture.com)

## What will this Millage Pay For?

### West Bank

#### Build...

- **Ellington Reach** (3.1-mile levee, 4 t-walls, 1 new pump station) **Luling**
- **Magnolia Ridge Reach** (Improve existing 3-mile levee, 1 new pump station, 1 t-wall, gate at Paradis Canal) **Boutte**
- **Sunset Reach** (Improve existing 13-mile levee, 1 new pump station) **Paradis, Bayou Gauche, Des Allemands**
- **West Bank Levee Closure** (Construct flood gate / pump station at Bayou DA w/ closure via Hwy. 90 Alignment **or** closure via Northern Alignment w/ 2 new pump stations)

#### Operate and Maintain...

- **West Bank and Vicinity Levee** (1-mile levee, 3 flood / railroad gates - Federal project) **Ama**
- **Willowridge Reach** (2.3-mile levee, 1 new pump station) **Luling**

### East Bank

#### Build...

- **Almedia Pump Station** (East Bank levee - cost share) **St. Rose**
- **West Shore Levee** (1.5-mile Federal levee - cost share) **Montz**
- **Prescott Canal Pump Station** (West Shore levee) **Montz**

#### Operate and Maintain...

- **East Bank Hurricane Protection Levee** (Federal project) **Norco, New Sarpy, Destrehan, St. Rose**
- **Trepagnier Pump Station** (East Bank levee) **Norco**
- **Cross Bayou Pump Station** (East Bank levee) **Destrehan**

## WHERE CAN I GET MORE INFORMATION?

### Town Hall Meetings

- 6-8 p.m. April 7 | American Legion Hall | 12188 River Road, St. Rose
- 6-8 p.m. April 9 | E.A. Dufresne Community Center | 274 Judge Edward Dufresne Pkwy., Luling

**Website** [www.scpfundingthefuture.com](http://www.scpfundingthefuture.com) | Search #scpFundingTheFuture on social media

### Voting

- Early voting is 8:30 a.m.-6 p.m. April 18-April 25 at the SCP Courthouse (15045 River Road, Hahnville) and Allen Arterbury Building (14564 River Road, New Sarpy)
- **Election Day is May 2 at your local precinct**